

Agricultural Extension in South Asia

Gender and Inclusion in Forest Landscape Restoration

Platform: Digital Campus – Global Landscapes Forum (GLF)

Duration: Self-paced

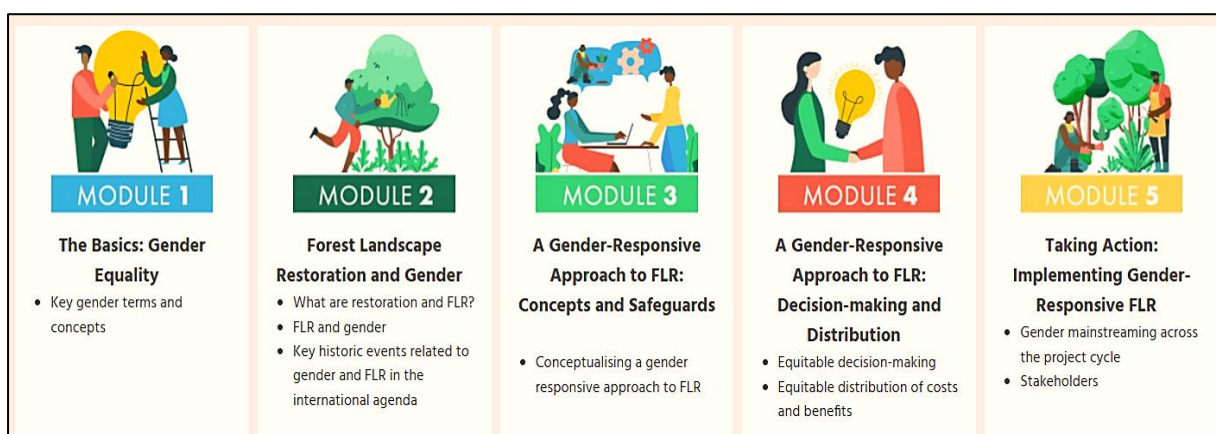
Certification: Yes, it's free (Upon completion)



With the global transition towards sustainable, non-exploitative resource management and a stronger focus on gender empowerment and social inclusion, the "Gender and Inclusion in Forest Landscape Restoration (FLR)" course emerges as a timely and relevant learning opportunity. This course addresses the need to understand and integrate the roles, needs, and contributions of women and girls in environmental and restoration efforts. It challenges learners to consider whether women are viewed merely as beneficiaries, vulnerable groups, stakeholders, or agents of change, and it emphasizes that recognizing and broadening these roles results in more inclusive, equitable, and effective programs.

This self-paced, certified e-learning course, accessible via mobile devices, is designed to deliver high-quality, structured content. It provides a strong foundation for gender-responsive planning and implementation within FLR. The course is the collaborative effort of diverse experts such as Marlène Elias (Alliance Bioversity International & CIAT), Ana Maria Paez-Valencia (Alliance Bioversity International & CIAT), Iliana Monterroso (Center for International Forestry Research-CIFOR), Markus Ihalainen (CIFOR), Molly Gilligan (EnGen Collaborative), Margaux Granat (EnGen Collaborative), and Varun Tumuluru (Global Landscapes Forum GLF).

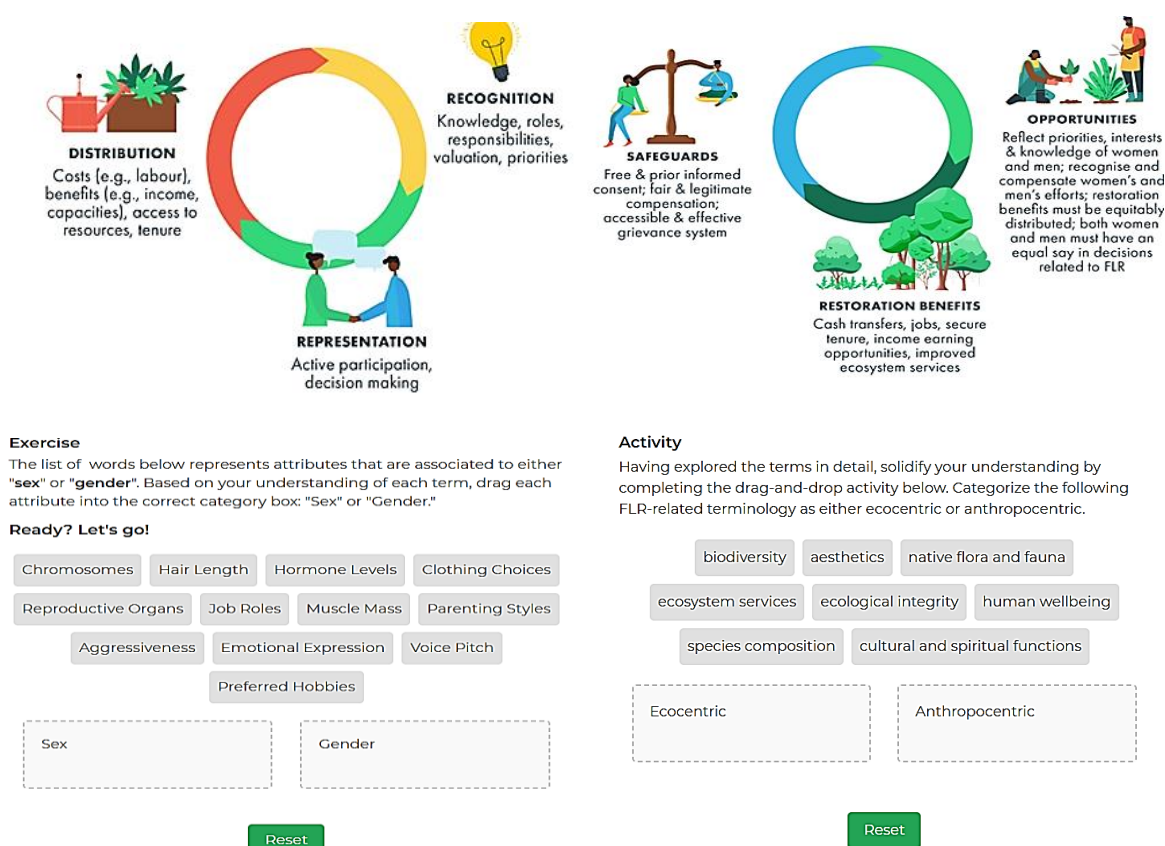
These experts bring interdisciplinary perspectives from gender, forestry, livelihoods, and policy research, ensuring that the course reflects both scientific rigor and field-level realities.



The course is structured into five modules, beginning with foundational gender concepts such as gender mainstreaming. It then progressively delves into practical applications using key tools and frameworks, including the Social Equity Framework, the Reach-Benefit-Empower Framework, and the [Human Rights-Based Approach](#).

The modules are enriched with:

- **Infographic-style conceptual illustrations** that simplify complex processes into visual, digestible elements
- **Interactive exercises** such as sorting tasks and reflection activities
- **Short videos and simple multiple-choice quizzes** with an 80% pass requirement for progression to the next module
- **End-of-module reflection pages** with summaries and thought-provoking questions
- **Case studies** from Asia, Africa, and Latin America, demonstrating real-world application of course principles such as addressing gender-based violence, secure tenure, women's leadership, and multi-stakeholder engagement



The infographic illustrates the components of a gender-responsive approach to Forest Landscape Restoration (FLR). It features a central circular diagram with four segments: **DISTRIBUTION** (Costs, benefits, access to resources, tenure), **REPRESENTATION** (Active participation, decision making), **RECOGNITION** (Knowledge, roles, responsibilities, valuation, priorities), and **SAFEGUARDS** (Free & prior informed consent; fair & legitimate compensation; accessible & effective grievance system). To the right, a circular diagram highlights **RESTORATION BENEFITS** (Cash transfers, jobs, secure tenure, income earning opportunities, improved ecosystem services) and **OPPORTUNITIES** (Reflect priorities, interests & knowledge of women and men; recognise and compensate women's and men's efforts; restoration benefits must be equitably distributed; both women and men must have an equal say in decisions related to FLR).

Exercise
The list of words below represents attributes that are associated to either "sex" or "gender". Based on your understanding of each term, drag each attribute into the correct category box: "Sex" or "Gender."

Ready? Let's go!

Attributes: Chromosomes, Hair Length, Hormone Levels, Clothing Choices, Reproductive Organs, Job Roles, Muscle Mass, Parenting Styles, Aggressiveness, Emotional Expression, Voice Pitch, Preferred Hobbies.

Categories: Sex, Gender.

Activity
Having explored the terms in detail, solidify your understanding by completing the drag-and-drop activity below. Categorize the following FLR-related terminology as either ecocentric or anthropocentric.

Terms: biodiversity, aesthetics, native flora and fauna, ecosystem services, ecological integrity, human wellbeing, species composition, cultural and spiritual functions.

Categories: Ecocentric, Anthropocentric.

Reset

Infographic-style conceptual illustrations and Interactive exercises

Participants are encouraged to engage in the course discussion forum, sharing reflections and learning from peers around the world. Upon registration, learners create a Digital Campus profile, which enables interaction with a broader learning community. Even after course completion, participants become part of an alumni network, fostering continued collaboration.

While the course does not include live or recorded lecture sessions, it features a series of interactive events at key milestones. Before the course began, a networking event was held, offering participants the opportunity to connect with the course authors, developers, and fellow learners. Midway through the course, a knowledge-sharing event provided a platform for exchanging experiences and ideas. Near the end, a webinar offered practical strategies and real-world insights to support participants in applying what they learned. Special guests included a gender-responsive programming specialist from CIFOR-ICRAF and an entrepreneur and innovator who shared perspectives on inclusive enterprise models in restoration, with a focus on women and youth, based on their personal experiences. Participants gain actionable insights into:

- Integrating gender into the entire project/program cycle (planning, design, implementation, monitoring, impact, and learning)
- Tools such as [ROAM](#) for landscape assessment and [Adaptive Collaborative Management \(ACM\)](#) and [Multi-Stakeholder Forums \(MSFs\)](#) for community engagement. A key foundational framework presented is the "[Ten Principles for a Landscape Approach](#)," which provides guidance for reconciling agriculture, conservation, and other competing land uses in an integrated and sustainable manner.
- Developing and applying gender-sensitive indicators for M&E
- Ensuring safeguards such as [Free, Prior, and Informed Consent \(FPIC\)](#), grievance redress mechanisms, and equitable compensation

The course offers a vast resource repository, including practical tips, trainer guides, roadmaps, manuals, and toolkits to support implementation in real-world settings. These resources enhance the transition from learning to action.

A certificate is available upon successful completion of the five modules. The course is recurrent, and those interested in enrolling are encouraged to check the [Digital Campus](#) regularly for upcoming sessions.

I found the course deeply engaging and informative. My interest in gender issues grew stronger throughout, particularly with exposure to human rights-based approaches and safeguarding principles, which broadened my understanding and increased my sensitivity to gender inclusion in development programs.

Regarding the course accessibility in the platform, a small issue I encountered was the need to submit a request to navigate from one module to another, which sometimes caused delays in learning while waiting for approval.

I highly recommend this course not only to those working on gender and forestry but also to individuals, professionals, and researchers engaged in rural development, extension, women's empowerment, and organizations supporting indigenous peoples. Whether you're new to the topic or seeking to enhance your understanding of gender integration in project planning and implementation, this course offers both foundational knowledge and actionable strategies, supported by real-life examples and extensive resources.



Ayush Emmanuel Lal is a Research Intern at the Centre for Research on Innovation in Science Policy (CRISP). He holds a postgraduate degree in Agricultural Extension and Communication from Sam Higginbottom University of Agriculture, Technology, and Sciences, Prayagraj. His research interests are adoption behaviour and gender issues in agriculture. He can be reached at ayushlal0712@gmail.com.

AESA Secretariat: Centre for Research on Innovation and Science Policy (CRISP)
Road No 10, Banjara Hills, Hyderabad 500034, India

www.aesanetwork.org

Email: aesanetwork@gmail.com